

# JARGY CO., LTD.

## Test Report

Model :CBL-PD302MBSWB-5m

Ver : 1.0

Date : 2017/8/25

Camera Brand Name : XIMEA

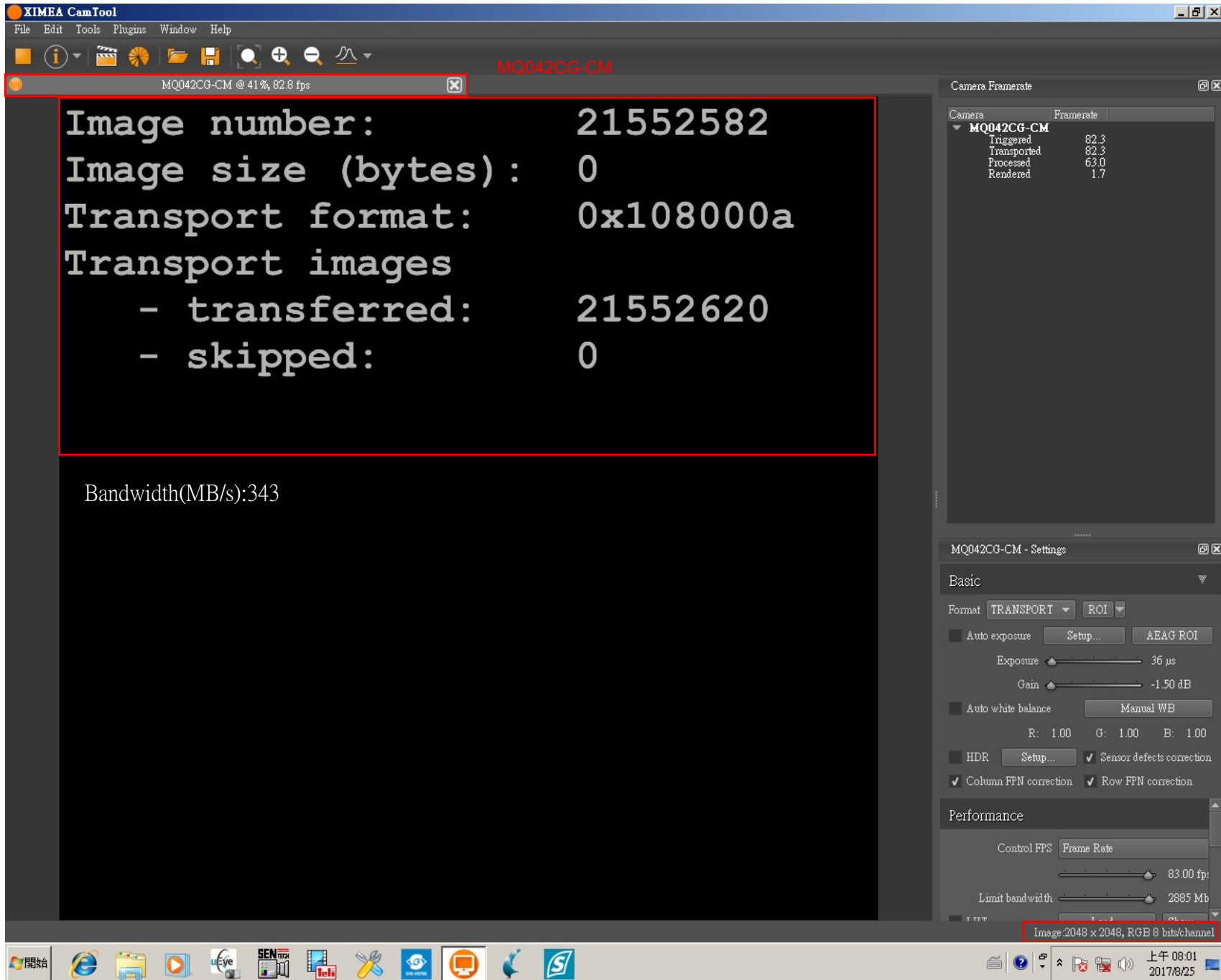
### Test Platform

Type	USB3 CAM Control System		
Model	Advantech AIIS-1440		
OS	Windows 7 Pro 64-bit		
CPU	Intel Core i7-3770		
HDD	SATA III 500GB		
RAM	DDR3 16GB		
USB 3.0	Dedicated controller 4 Ports (uPD720202)		


Tested Camera : MQ042CG-CM (2048 x 2048, 4.2MP, 90fps, 369MB/s)

Tested time :72h





Camera	Framerate
MQ042CG-CM	
Triggered	82.3
Transported	82.3
Processed	63.0
Rendered	1.7

MQ042CG-CM - Settings

Basic

Format: TRANSPORT | ROI

Auto exposure | Setup... | AEAG ROI

Exposure: 36  $\mu$ s

Gain: -1.50 dB

Auto white balance | Manual WB

R: 1.00 | G: 1.00 | B: 1.00

HDR | Setup... |  Sensor defects correction

Column FPN correction |  Row FPN correction

Performance

Control FPS: Frame Rate

83.00 fps

Limit bandwidth: 2885 Mb

Image:2048 x 2048, RGB 8 bits/channel